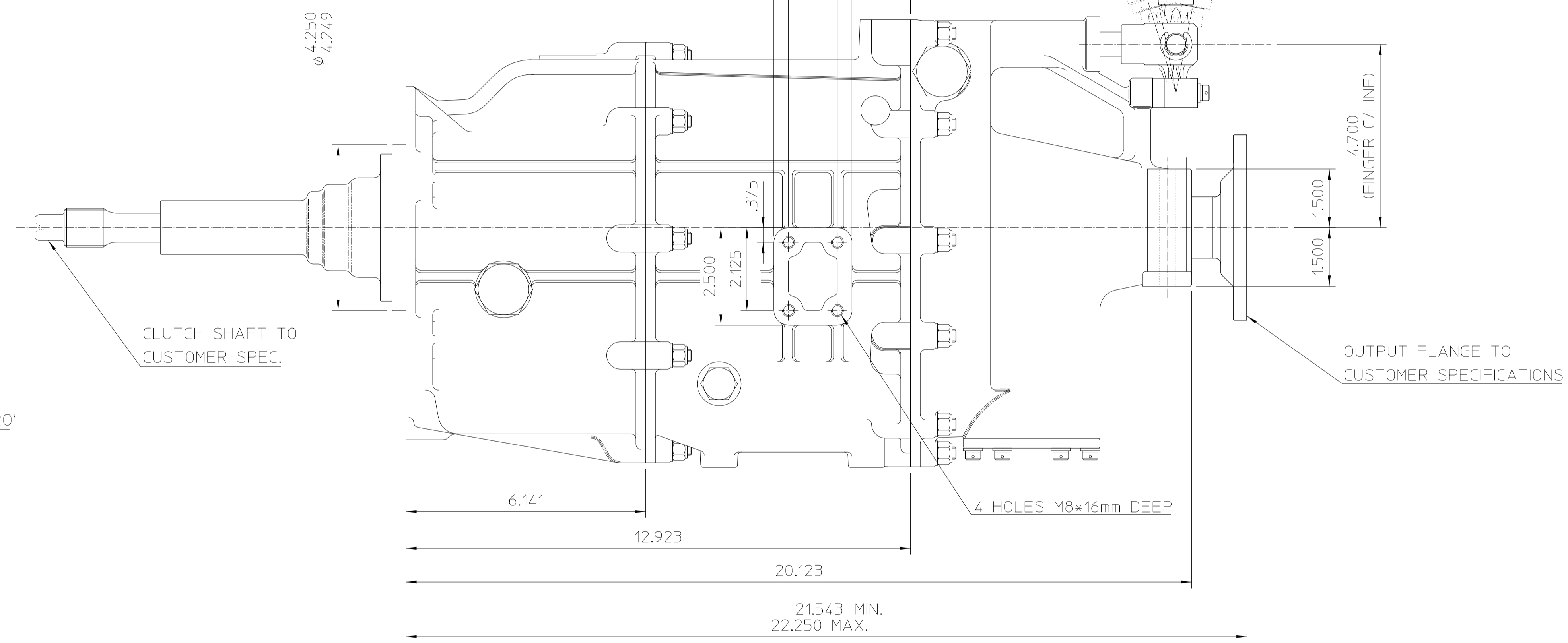
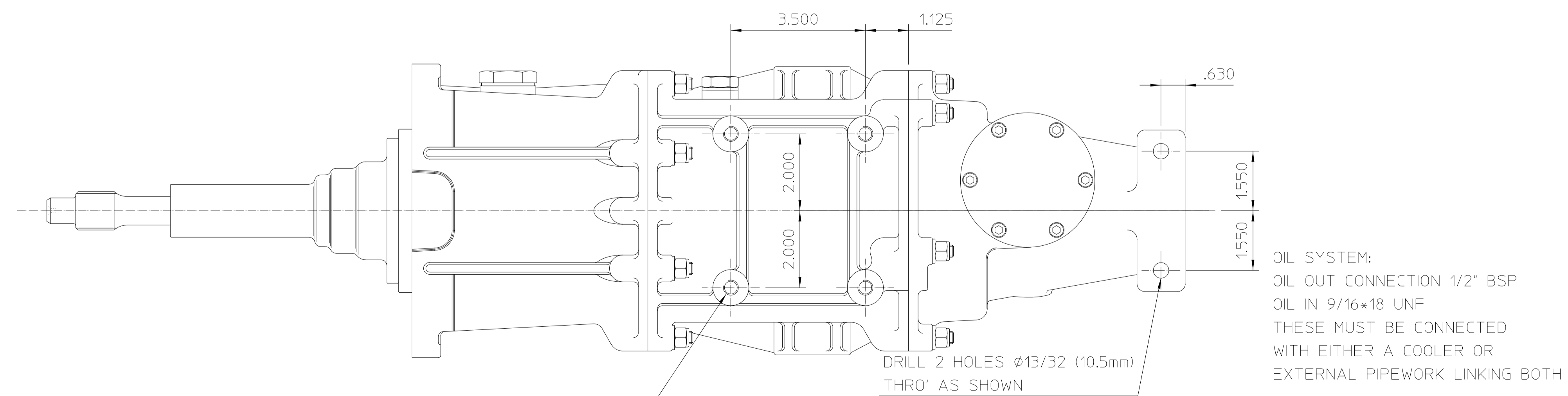


VIEW FROM FRONT OF GEARBOX



UNDERSIDE VIEW OF GEARBOX



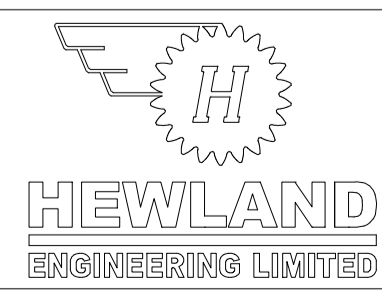
TRANSFER RATIOS AVAILABLE:-
21/28 1.333:1
22/27 1.227:1
23/26 1.130:1
24/26 1.083:1
25/25 1.000:1

1st TO 6th GEAR:- CHOICE OF
48 RATIOS FROM 13/40 (3.077:1)
TO 24/24 (1.000:1)
APPROXIMATE WEIGHT:- 38Kg

NOTE:-
SEE HYD-041 FOR OIL SYSTEM PIPEWORK KIT
REFERENCES. (OIL COOLERS ARE NOT INCLUDED.)

③

MATERIAL ASSEMBLY N/A	SCALE 1:2	DIMENSIONS INCHES	MACHINING TOLERANCES UNLESS STATED GENERAL DIM TOL TO BE +0.12mm (+0.005") ANGULAR DIM TOL TO BE +0.25° HOLE POS'N TOL TO BE +0.25mm (+0.010") REMOVE ALL BURRS & SHARP EDGES
HEAT TREATMENT NONE	DRAWN M.T.	APPROVED G.R.	
SHOT PEEN NONE	07/04/2000	10/08/2004	
FINISH CLEAN & OIL	G.R.	10/08/2004	
TITLE 'SGT' INSTALLATION			DRG. No. SGT-200-I Sheet 1 Of 1



ISSUE	MODIFICATION	DATE
3	HYD-041 NOTE ADDED	G.R. 10/08/2004
2	SPELLING CORRECTED	M.T. 03/04/2001